



THE BORLAND BULLETIN

ISSUE 1 • MARCH 2021 •



Welcome to the first edition of the Borland Bulletin.

As another way to keep our local community in touch with what's been happening at Borland we have decided to publish the bulletin quarterly, so you can expect to see this newsletter popping into your inboxes each season.

**BORLAND
ADVENTURE AND
EDUCATION TRUST**

**WHAT'S
INSIDE?**

Message from our
Chairman

Winton Lions volunteer at
Borland

Important notices

Out and About at Borland

MESSAGE FROM OUR CHAIRMAN

By Grant Hubber

It's hard to believe we are already a quarter of the way through the year. It has been a year since the Covid-19 lockdown hit New Zealand and we are so grateful reflecting on where we are now, in comparison to a year ago and our gratitude goes out to our local community for making sure we are still here a year on.

We had a very successful AGM at Borland in October with the best attendance of the community we have had for a number of years. This was a great way for people to also have a look at the lodge and an opportunity to meet with us. At that meeting, Life Memberships were awarded to Anne McCracken and John McHugh for their many years of work on the trust and we do appreciate all the time and effort they give to Borland. Congratulations John and Anne.

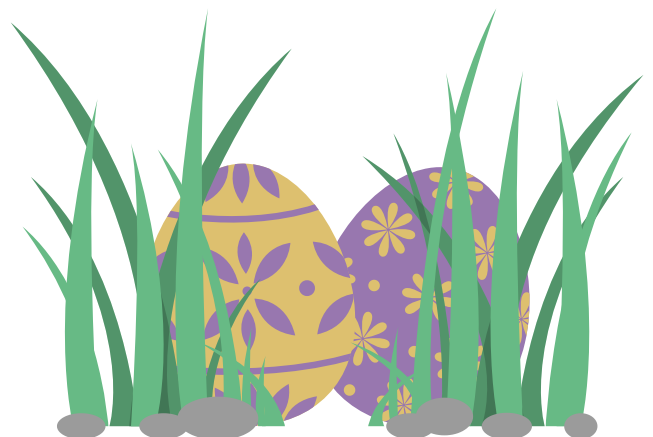
All credit for the lodge presentation goes to our managers, Raewyn and Alan Lowe and the dedication they put in keeping the buildings and grounds looking so good.



Life members John McHugh and Anne McCracken with Chairman Grant Hubber at the Borland AGM last year

We hope you enjoy reading our newsletter and remember to also **keep in touch with what is happening at Borland through our Facebook page @borlandlodge**

We would like to thank you all for your support and wish you a safe and happy Easter weekend. We hope to see you soon.



WINTON LIONS VOLUNTEER AT BORLAND



"We Serve Because Kindness Matters"

**The Lions Club of Winton – Weekend Away
Borland Lodge 12/13 February 2021**

Lions Clubs and in particular the Lions Club of Winton have a lengthy association with the Borland Trust. We have just completed our annual weekend visit during the Waitangi weekend with 23 members of our Club attending.



On the Saturday we do scheduled maintenance, in this case cleaning and painting the outside seats, as well as cleaning and painting the steps of the older chalets. Plus whatever other jobs are required to be done. For us going to Borland, aside from supporting the Trust is also an opportunity for us as Lions to have social interaction in what is a special environment.



The Lions Club of Winton proudly kicked off a fundraiser for the Trust last year with a \$5500 donation ensuring its survival during the COVID period. **Our weekend is another way for us to support Borland Trust, the motto of Lions being "We Serve".**

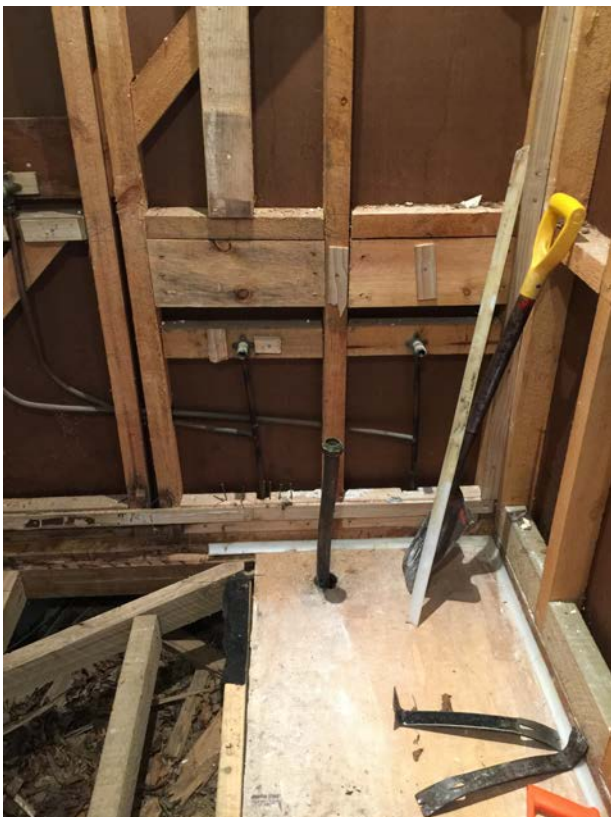


BETCHELS GETS A MAKEOVER

Our popular self-contained unit, Bechtels, is getting it's bathroom refurbished. The vinyl goes down at the end of April and we can't wait to share the finished photos with you in our June edition. Below are some of the photos of the renovation in progress.

For those who aren't familiar with Bechtels, it is a self-contained unit with a separate bedroom consisting of a queen bed. The bathroom has a toilet and wet area shower and both have handrails. This unit also has a kitchen/dining area with a stove, fridge, microwave and toaster. There's a television in the lounge area for all to enjoy.

A big thank you to Keith Cooper and team for their work on this exciting refurbishment.



IMPORTANT NOTICES

Lake Monowai Road suspension bridge maintenance

In February the Southland District Council sent us a letter which outlined some important information about road closures. Maintenance work is being carried out on the Lake Monowai suspension bridge and will be undertaken by Fulton Hogan.

The work is programmed to commence on Wednesday 24th of March and will take approximately 4 weeks. The closures will occur from 6pm to 6am, Sunday through to Thursday, finishing on 21 April 2021.

The bridge will be open at weekends, from 6am Friday until 6pm Sunday, and also during Easter weekend.

For Easter weekend the bridge will be open from 6am Thursday, 1 April, until 6pm Wednesday 7 April, when work will resume.

If an emergency occurs during these closures, contractors working on site will have plans in place to ensure emergency services and other supporting vehicles can cross the bridge.



On Track: Updates from the DOC SSI Flood Recovery Program

Keeping you up-to-date with the latest developments and news on the flood recovery for Fiordland and Mt Aspiring National Parks.

Kia ora! It is great to see people out and about exploring NZ. The shift into Autumn is noticeable now – calmer, chillier weather with some brilliant sunsets & sunrises. Daylight hours are starting to shorten. There have also been a few frosts and a bit of fog to deal with on our early Te Wāhipounamu starts. Plan your trips accordingly.

Latest News!

The team are delighted to share that, on the third attempt, the replacement 60m 3-wire bridge at Loch Maree, on the Dusky Track, was successfully installed this month. The five DOC personnel were on site for 7 days building the entire structure from (below) ground up. They also battled with the incessant sandflies and a significant rainstorm that flooded their work area (and equipment) overnight. There is a huge sense of pride and satisfaction in getting this significant and complex task (finally) ticked off. YAY!



Photos 1-4: Loch Maree 3-wire bridge installation. Credit: DOC

Sunrise over Loch Maree



Photo 5: Morning Glory. Credit: James Harvey, DOC Te Anau

SSI Flood Recovery Program

The 3-year program was established as two tranches.

Tranche 1

Tranche 1 was designed as a set of five interrelated projects and focussed on repairing damaged visitor sites in time for the 2020/21 summer season. Some projects continue as scheduled.

Cleddau Flood Protection Scheme Repair

Contractors have successfully completed all the work for the Cleddau Flood Protection Scheme to a high standard. The project has concluded, with just some of the project closure paperwork to finish off. Well done everyone 😊

Track Repair

For *Tititea Mt Aspiring NP*, the contracts to repair the damaged sections of tracks - Dart Track (between Sandy and Chinaman's Bluffs), and the Greenstone-Caples Track (over McKellar Saddle) - are close to being finalised. Both tracks are open to the public at present and will remain open when the work begins.

For *Fiordland NP*, the Humboldt Falls Track at the lower end of the Hollyford Road is now OPEN. The other tracks that are accessed from the Hollyford Road remain closed.

Biodiversity Infrastructure Repair

The procurement process is ongoing. More news next time.



Tranche 2

Tranche 2 has the medium-term outlook (2021-23) and will focus on the re-instatement (and where appropriate, enhancement) of visitor opportunities at selected flood-affected sites within northern FNP.

The initial body of work is focussing on three sites namely, **Lake Howden (shelter and toilet), the Hollyford Track and the Chasm.**

The work to define the scopes of the various projects started in January. The program team will have a clearer picture by mid-year. Engagement with our iwi partners has started as well as seeking input from stakeholders.

The program governance group, along with senior DOC and program managers, project team members and various technical personnel visited Fiordland throughout March. They visited the flood-affected sites on the Milford Road and everyone got a comprehensive “on the ground” feel for the completed work as well as the planned works.



Photo 6: Management by walkabout at Lake Marian Falls. Credit: DOC

Lake Howden

With the hut and amenities gone, this project involves the installation of replacement visitor facilities at Lake

Howden, namely a day shelter and toilets. Some potentially suitable locations for the facilities have been identified. Stay tuned as we work through the various requirements.



Photo 7: The program team mingle with trampers at a busy Lake Howden. Credit: DOC

The Chasm

The scoping, assessment and planning of the recovery work for the Chasm continues. Comprehensive geotechnical assessments are scheduled for late March and will inform on possible repairs, especially to the carpark.

The DOC Visitor Experience Design group have been assigned to develop a concept to see how the visitor experience could be enhanced alongside any repairs.

The Chasm Walk and carpark remains closed due to the significant damage sustained in the storm. We are fully aware of the intense interest in this site and are very mindful of keeping matters progressing with this project.

Department of Conservation
Te Anau District Office
PO Box 29
Te Anau 9600
New Zealand

Hollyford Track

The focus of Tranche 2 for the Hollyford Track is to reinstate the track to its original service standard (Back Country Comfort seekers / Easy Tramping Track) as per the Fiordland National Park Management Plan.

The Department is taking a wider view and reviewing the significant damage sustained across the Hollyford Valley/Routeburn faces as a whole - which includes the multiple landslides that damaged the lower Hollyford area - and how this landscape may impact on the resilience of the Hollyford Track. A geological hazard assessment is to be commissioned and will help inform any decisions.

A Climate Change Adaptation Action Plan will be commissioned by DOC to also help inform any decisions. We want to ensure that the repairs are resilient in the long term and consider future severe weather events.

Hollyford Track / Hollyford Road access

Milford Road Alliance have reported that the repairs to the last 3km section of the damaged Hollyford Road are progressing well. Trampers can continue to safely walk between Girder Creek carpark and the Hollyford Track.

(Allow 50-60 minutes one way.)

Continue to obey all notices and signs, watch for the heavy road works machinery, and follow instructions



Photo 8: Physics 101: water taking the path of least resistance. Credit: Milford Road Alliance

from the contractors. The photo above, taken just after the Feb '20 storm, shows the extent of the washed-out road below Girder Creek.

Concessionaire Corner

The priority fast-tracking & support processes are still available for concessionaires whose operations were affected by the Feb '20 storm. Contact the Permissions Team on dunedinpermissions@doc.govt.nz about how we can support you with your post-flood recovery.

What's next?

The next Update will be issued in 3-4 weeks. You can contact Helen (email below) with questions or concerns about any aspect of the SSI Flood Recovery Program.

Continue to check the DOC website, or at the local Visitor Centre, for current news and information before you head into the great outdoors. Ngā mihi.

*He waka eke noa - we are all in this together.
We rise together, fall together, work together, keep going together.*

Update: 25 March 2021

Helen Matthews - Email: hmatthews@doc.govt.nz
Program Engagement Coordinator, SSI Flood Recovery Program.
www.doc.govt.nz

OUT AND ABOUT AT BORLAND



Check out these recent images that have been shared on Facebook of some of our local community enjoying their stays at Borland. To book your next adventure please visit <https://www.borlandlodge.co.nz/>



The juniors at Te Anau school having fun learning to use the climbing wall in March



The Te Anau school juniors enjoying the outdoors at Borland

Love was in the air at Borland in February as Rory and Sarah tied the knot with friends at family at Borland. A special thank you to the photographer Nicole Mennell for sharing these photos with us on Facebook.

